

# COURT AND MAIN RULES OF BASKETBALL



Salvador Ginés Girona  
Ivo Aničić

## PLAYING COURT

Playing court shall have a flat,hard surface free from obstructions,with dimensions of twenty-eight (28) m in lenght by fifteen(15)m in width measurd from the inner edge of the boundary line.

## BACKCOURT

A teams backcourt consists of its teams own basket, the inbounds part of the backboard and that part of the playing court limited by the endline behind the teams own basket, the sidelines and the centre line.

## FRONTCOURT

A teams frontcourt consists of the opponents basket, the inbounds part of the backboard and that part of the playing court limited by the endline behind the opponents basket, the sidelines and the inner edge of the centre line nearest to the opponents basket.

## LINES

- All lines shall be drawn in a white color, five (5) cm in width and clearly visible.
- Boundary line: the playing court shall be limited by the boundary lines, consisting of the endlines and the sidelines. These lines are not part of the playing court.

## Centre line, centre circle and free-throw semi-circles

- The centre line shall be marked parallel to the endlines from the mid-point of the sidelines. The centre line is a part of the backcourt.
- The centre circle shall be marked in the centre of the playing court and have a radius of 1,80 m measured to the outer edge of the circumference. If the inside of the centre circle is painted, it must be the same colour as the restricted areas.
- The free-throw semi-circles shall be marked on the playing court with a radius of 1,80 m measured to the outer edge of the circumference and with their centres at the mid-points of the free-throw lines.

### Free-throw lines

The free-throw lines shall be drawn parallel to each endline. It shall have its furthest edge 5,80 m from the inner edge of the endline and shall be 3,60 m long. Its mid-point shall lie on the imaginary line joining the mid-points of the two(2)endlines.

### Three-point field goal area

The teams three-point field goal area shall be the entire floor area of the playing court, except for the area near the opponents basket. The three-points line is not part of the three-point field goal area.

### Team bench areas

- The team bench areas shall be marked outside the playing court limited by two lines.
- There must be fourteen (14) seats available in the team bench area for the coaches, the assistant coaches, the substitutes and the team followers

### Throw-in lines

The two (2) lines of 0,15 m in length shall be marked outside the playing court at the sideline opposite the scorers table, with the outer edge of the lines 8,325 m from the inner edge of the nearest endline.

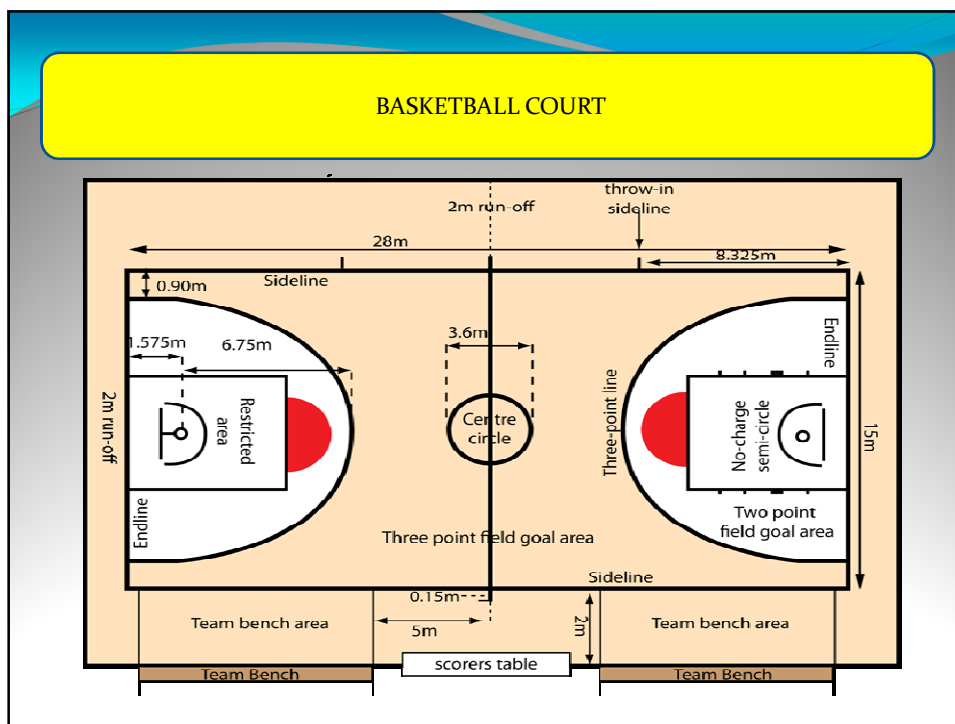
### No-charge semi-circle areas

The no-charge semi-circle lines shall be marked on the playing court, limited by:

- A semi-circle with the radius of 1,25 m measured from the point on the floor beneath the exact centre of the exact centre of the basket to the inner edge of the semi-circle. The no-charge semi-circle lines are not part of the no-charge semi-circles areas.

### The restricted areas

The restricted areas shall be the rectangular areas marked on the playing court limited by the endlines, the extended free-throw lines and the lines which originate at the endlines, their outer edges being 2,45 m from the mid-point of the endlines and terminating at the outer edge of the extended free-throws lines. The inside of the restricted areas must be painted.



### NUMBER OF PLAYERS

POWELL WALTON BYNUM FISHER GASOL BRYANT ODOM ARTEST VUJACIC FARMAR MBENGA BROWN

Teams are composed of twelve players, five of which may be on the court.

## PLAYING TIME

- The playing time in FIBA is 40 minutes of real play in two parts of 20 minutes.
- Each part is divided in 2 periods of 10 minutes.
- If the match ends in draw, play five minutes of extra period.



## TIME-OUT



- Each team can ask for 5 time-out, two in the first part (first and second period) and three in the second part (third and fourth period).
- They can ask for one time-out in each extra period.

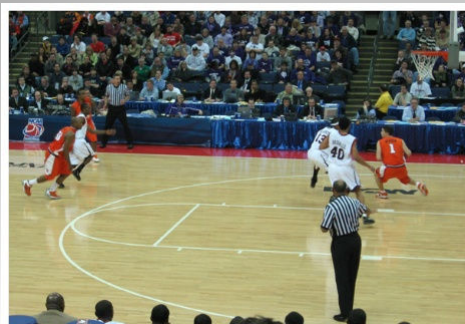
## VALUE OF THE POINTS

The value of the points is uniform:

- A free throw is 1 point.
- A shot inside the perimeter is 2 points.
- A shot made outside the perimeter is 3 points.



## 8 SECONDS



When a player has the control of the ball in the backcourt, his team must get the ball to the frontcourt before eight (8) seconds.

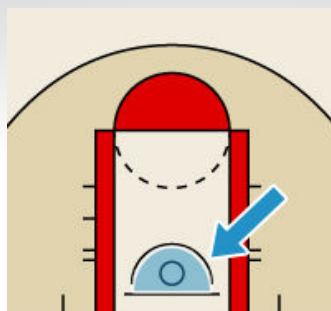
24 SECONDS



When a player has the control of the ball on the court, his team must make a shot before twenty-four (24) seconds.

3 SECONDS

A player must not remain in the opponents restricted area for more than three (3) consecutive seconds while his team is in control of the ball.



### CLOSELY GUARDED PLAYER



A closely guarded player must pass, shoot, or dribble the ball before five (5) seconds.

### BALL RETURNED TO THE BACKCOURT



If the ball is in the frontcourt:

- The ball can't touch the backcourt.
- The ball can't touch a player or referee if they are keeping in touch with the backcourt.

**TRAVELING**

- If a player receives the ball and lift both feet off the ground before dribbling.
- If the player make three steps after dribbling the ball.

**DOUBLE**


- If a player receives the ball, dribbling it, catches it and dribbling it back

The ball can only be controlled with the hands

**FOULS**

**Personal fouls:** Include any type of illegal physical contact:

- Hitting
- Pushing
- Slapping
- Holding
- Illegal screen



## PERSONAL FOUL PENALTIES



- If a player is shooting while being fouled, then he gets two free throws if his shot doesn't go in, but only one free throw if his shot does go in.
- Three free throws are awarded if the player is fouled while shooting for a three-point goal and they miss their shot. If the player makes his shot, he is awarded one free throw.

## TYPES OF FOULS



**Charging.** An offensive foul that is committed when a player pushes or runs over a defensive player.

### TYPES OF FOULS



**Blocking.** It's illegal personal contact resulting from a defender not establishing position in time to prevent an opponent's drive to the basket.

### TYPES OF FOULS



**Flagrant foul.** Violent contact with an opponent. This includes hitting, kicking, and punching. This type of foul results in free throws besides the possession of the ball.

## TYPES OF FOULS



**Intentional foul.** When a player makes physical contact with another player without reasonable effort to steal the ball.

## TYPES OF FOULS



**Technical foul.** A player or a coach can commit this type of foul. It doesn't involve player contact or the ball but is instead about the 'manners' of the game. Foul language, obscenity, obscene gestures...

THANK YOU FOR YOUR  
ATTENTION!



Smile